

IQVIA Real World Evidence Generation

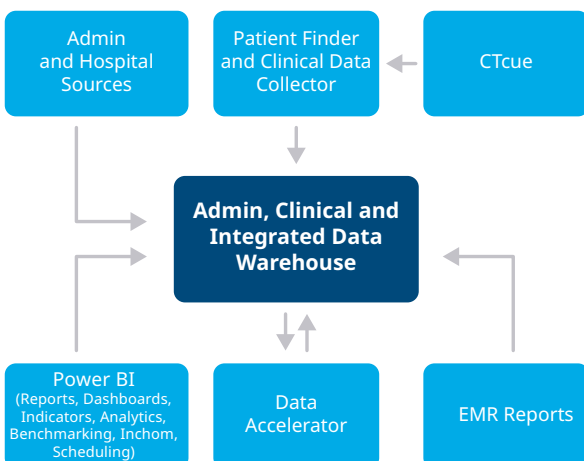
Fast access to robust, fit-for-purpose, secondary care data in Belgium

The healthcare environment is more specialized, competitive, and cost-sensitive than ever. Teams across the lifecycle need relevant, reliable evidence to demonstrate product value and support complex decision-making. Finding high-quality data is crucial but particularly challenging within secondary care, where disparate systems, fragmented sources, and inconsistent approaches to capturing information can hinder the extraction of meaningful insights.

Source the right hospital data at scale

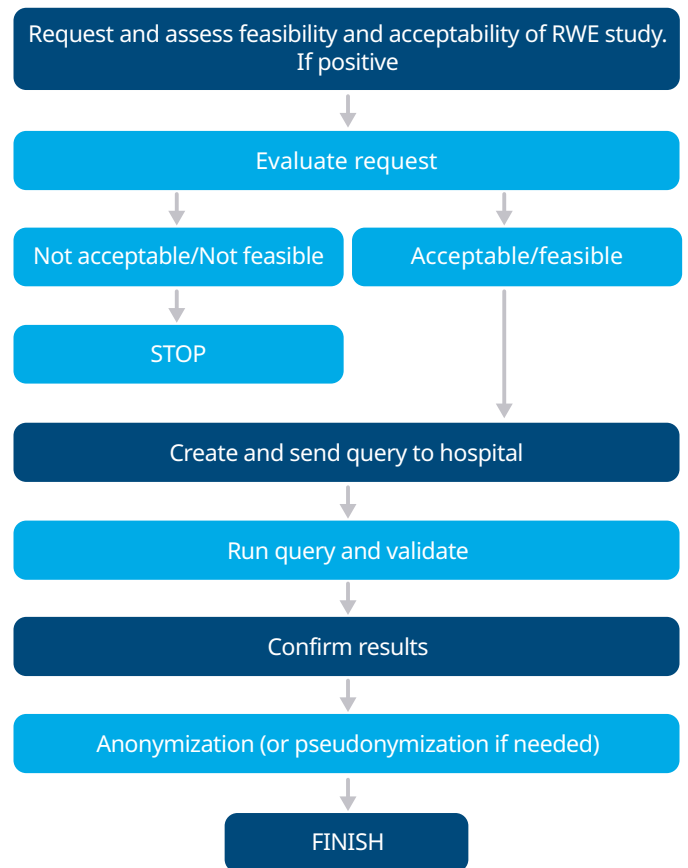
IQVIA Real World Evidence generation unlocks administrative and clinical secondary care data in Belgium for robust scientific research and statistical analysis. Building on IQVIA's long-standing relationships with a large number of hospitals across Belgium, it captures all available information from standardized, fully structured data such as administrative and invoicing information, to more complex and less accessible data such as Electronic Medical Records (EMR) or other Clinical data. Due to being a substantial company in the Belgian hospitals industry, IQVIA can leverage its IT expertise to enable the access to fit-for-purpose sources to help you gain real insights and meet stakeholder requirements with confidence and scientific robustness

REAL WORLD EVIDENCE GENERATION UNLOCKS VALUABLE CLINICAL AND ADMINISTRATIVE INFORMATION



TARGETED APPROACH FOR FOCUSED RESEARCH

All projects leveraging the network are protocol-based, follow a structured and transparent process, and are conducted in full compliance with privacy regulations.



■ IQVIA and/or Pharma company ■ Hospital

Our targeted approach ensures that only the most relevant data is extracted in a GDPR compliant way and that original data remains within the hospital. If and where necessary, the analysis can be enhanced with Artificial Intelligence AI/ML using CTcue's possibilities to recover patients and collect data via NLM, to facilitate queries through unstructured data and address more complex queries.

1. PRELIMINARY LITERATURE SEARCH

Informs methodology and optimal strategy to address well-identified research questions

2. PROTOCOL-BASED

Guarantees scientific robustness fit for scientific publication and regulatory bodies

3. TARGETED

Ensures that only the most appropriate data sources are selected upfront and queried as per protocol

GENERATE IMPACTFUL EVIDENCE QUICKLY, EFFICIENTLY AND COMPLIANTLY

Real World Evidence generation is the most comprehensive single source of secondary care information in Belgium, allowing standardized connectivity and interrogation of hospital data at scale. This ensures rapid study set-up and protocol approval through simple ad-hoc contracting, in full accordance with privacy regulations. With wide-ranging applications across the lifecycle, the network offers

- **Diversity, range and richness** of Belgian real world hospital data
- **Time- and cost-efficient approach** to generate scientifically robust real world evidence

- **Flexible, lower cost alternative** to chart reviews or observational studies
- **Multiple uses** including
 - » Test study feasibility earlier and faster
 - » Accelerate trial site identification
 - » Map patient pathways
 - » Calculate real world treatment and disease costs
 - » Collect endpoints, including clinical trial outcomes, in an automated way

INFORMING REIMBURSEMENT IN ONCOLOGY USING LINKED HOSPITAL DATA - EXAMPLE

CHALLENGE: To identify immuno-oncology patient numbers and indication split for the reassessment of a monoclonal antibody product granted conditional market access under a Managed Entry Agreement.

APPROACH: IQVIA identified and linked relevant pharmacy, and financial (invoice) information extracted from the Federated Hospital Data Network to create an immuno-oncology progression and quantify patients treated per product and reimbursed indication.

BENEFITS: More than 90% of the identified immuno oncology patients were assigned to a reimbursed indication based on the algorithm, which could also be used as a monitoring tool in reference centers within this therapy area.

To find out more and discover how the IQVIA Federated Hospital Data Network can help you to achieve real results by generating the right evidence to meet stakeholder needs, contact **Hervé Akpo** at herve.akpo@iqvia.com, or **Pierre Chevalier** at pierre.chevalier@iqvia.com.

CONTACT US

For more information, please contact
Hervé Akpo | esseifebiherve.akpo@iqvia.com
Pierre Chevalier | pierre.chevalier@iqvia.com
[iqvia.com](https://www.iqvia.com)

