

2023 full year overview

# IQVIA Health Data Catalog

The go-to global source to rapidly identify the most relevant Real World Data sources

**The IHDC team wishes you an excellent year 2024!**

This is a special edition of the monthly IHDC infographics providing an overview of how the catalog evolved in 2023. We are proud to share below some chosen metrics showcasing the continuous dynamism of the evolution!

**The IQVIA Health data catalog evolution in 2023**

Via the proactive management of the community of data sets owners and experts — in and outside of IQVIA — IHDC has undergone a relentless evolution over the year resulting in the following main changes:



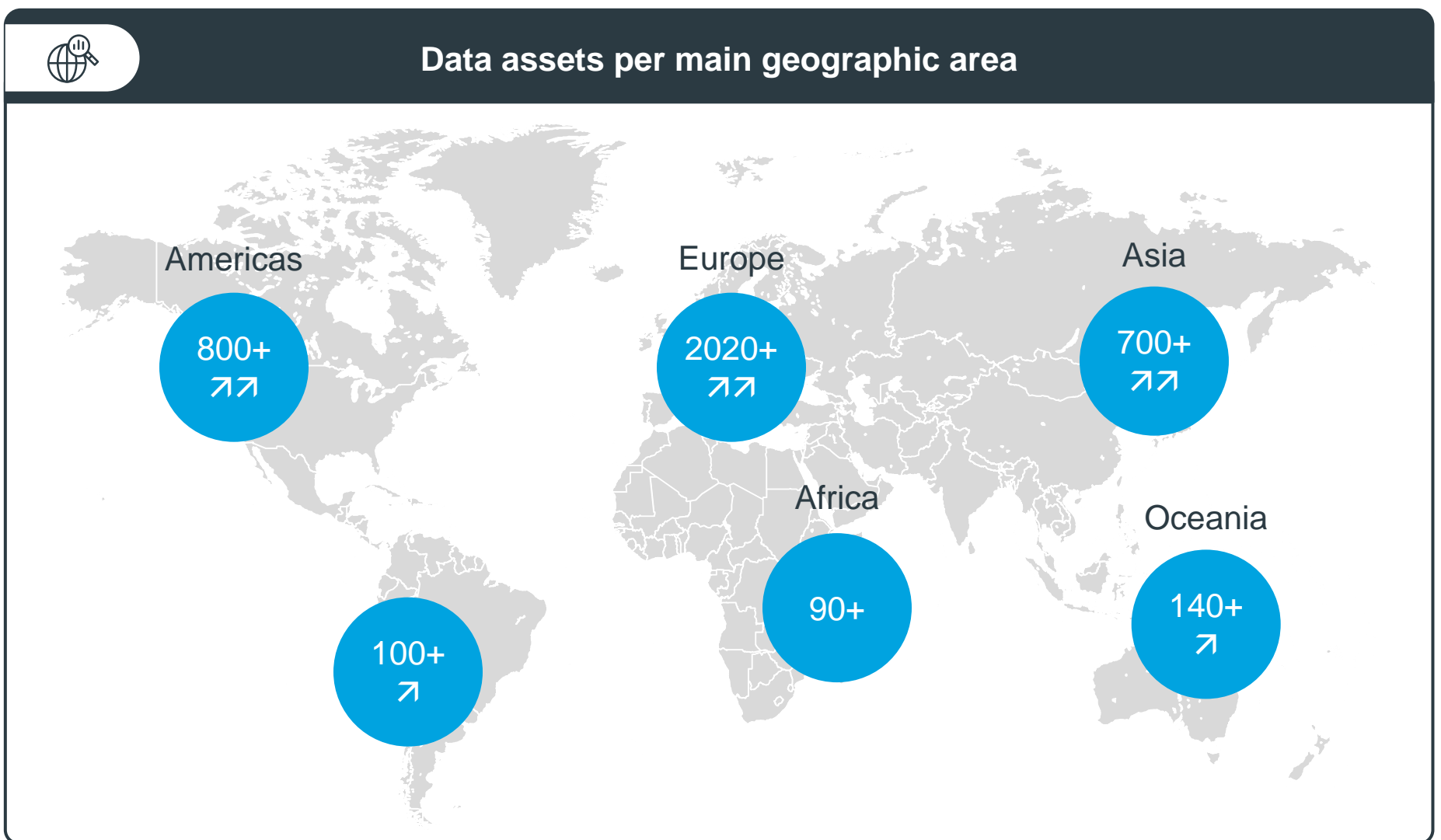
The # of referenced **data sets**, has increased **by 1,200+** (net gain with new added assets and some archived obsolete ones), reaching **3,400+** in December



Europe and North America have seen the highest increase with respectively 780+ and 480+ added assets



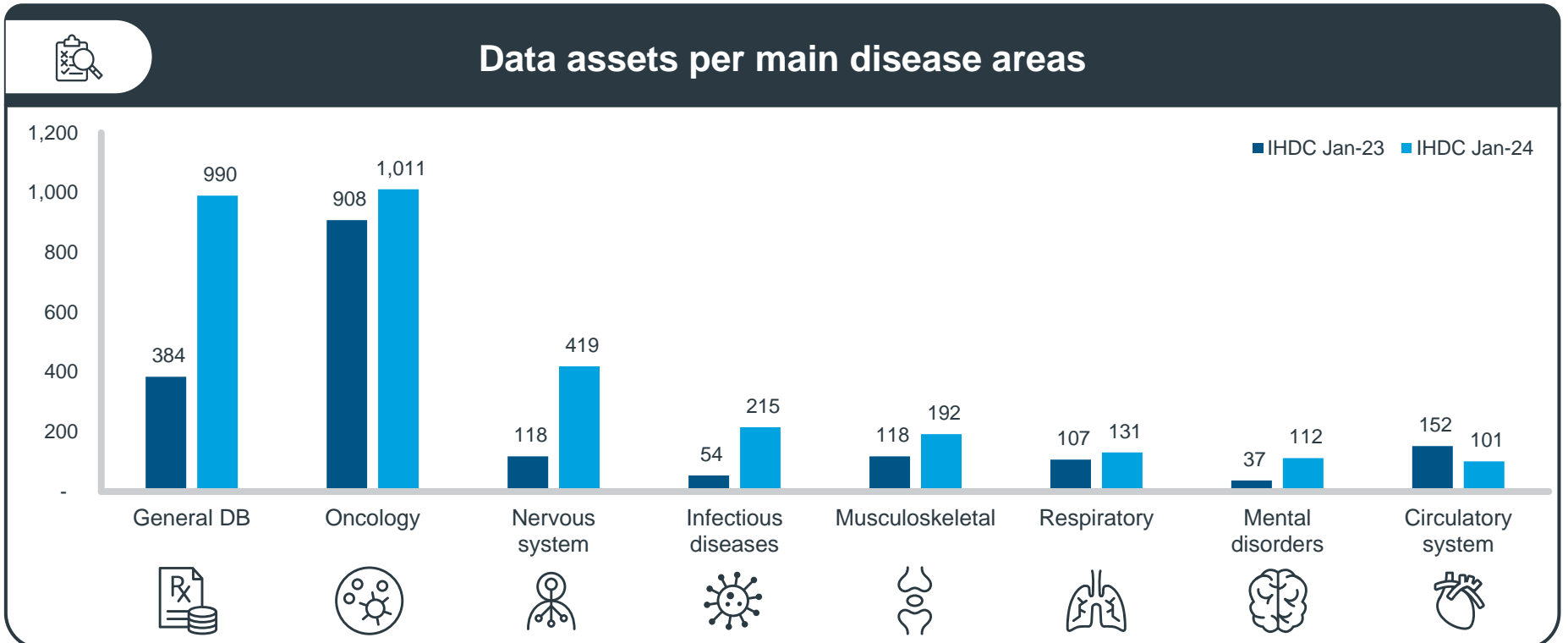
The # of listed sources in Asia increased by 250+ and doubled in Oceania up to 80+, while the # of referenced assets remained stable in Latin America and Africa



Most of the data sources referenced in IHDC are disease specific, oncology being the most frequent therapeutic area covered

However, the recent add-ons have especially benefited to non-oncology assets, and in particular to databases covering diseases of the nervous system (70+ covering Alzheimer/ dementia, 50+ covering multiple sclerosis, 50+ covering Parkinson, etc.)

The number of “general datasets” also significantly increased: 600+ added, most of those from hospital settings



The **fill-in rate** on the landing page of the catalog is set as an indicator providing transparency and managing expectations on the available level of information on listed assets. The % represent the number of items documented out of expected items to be documented

The ongoing orchestrated efforts of **155+ teams** of data holders and SMEs resulted in an **increased depth of data sets' profiling**: In addition to the 1200+ added assets, **350+ data assets profiles have been updated** over 2023, positively impacting the **fill-in rate which globally increased by +6 points** (from 12% to 18%), and for some assets up to +45 points

These efforts to deepen IHDC content resulted in a higher proportion of data assets showcasing a significant level of depth (fill-in rate > 26%, corresponding to more than 35 variables documented), while the share of data sets with low fill-in rates decreased drastically

Fill-in rate range	Jan 2023 2,172 assets	Jan 2024 3,469 assets
<15% or <20 variables	1,985	1,644
15% – 25% or 20 – 34 variables	37	1,399
26% – 50% or 35 – 68 variables	14	268
>51% or >69 variables	136	158

The efforts to broaden and deepen the content of the catalog have been facilitated by some developments – transparent for the users – but significantly contributing to an improved quality of the content. The “import program” for example, is facilitating the harmonization of IHDC information across data assets coming from different sources

## IQVIA Health data catalog: What's next?

With several changes already scheduled, 2024 is expected to confirm the development dynamism of IHDC in terms of content **breadth and depth** with added emphasis on terminology harmonization and data sets quality metrics

### Quality and relevance of the content

- Currently focusing on patient data, IHDC will progressively cover **other types of health data** (sales data, health care professional data, unstructured data, etc.)
- Further improvements will be made to **support harmonization of terminology** across various fields (such as “data categories”)
- New chapters will be made available to further deepen the description of data sets:
  - A **data quality** framework, further expanding existing variables such as coverage, will be added to facilitate the evaluation of fitness for purpose of data assets relevant to given research projects
  - Therapeutic area deep dives** (upon subscription) providing detailed focused information on how data assets cover 15+ selected conditions will be deployed starting Q1

### Quality of the user experience

- A **Save search** allowing to save search criteria (instead of re-entering them systematically) is now available making it fast to refresh results as needed. Soon an “alerts” feature will make sure to send notifications when new data assets corresponding to your save search will be added in the catalog
- In Q2 a new **user interface** (mid-2024) to facilitate search and navigation across IHDC chapters