

# IQVIA Technologies Risk-Based Monitoring

## Orchestrate better outcomes with IQVIA Technologies Risk-Based Monitoring



**12.5**  
Days faster to database lock vs. non-RBM studies

**31%**  
Less SDV backlog for RBM studies vs. non-RBM studies

**21%**  
Reduction in patient visit data entry lag

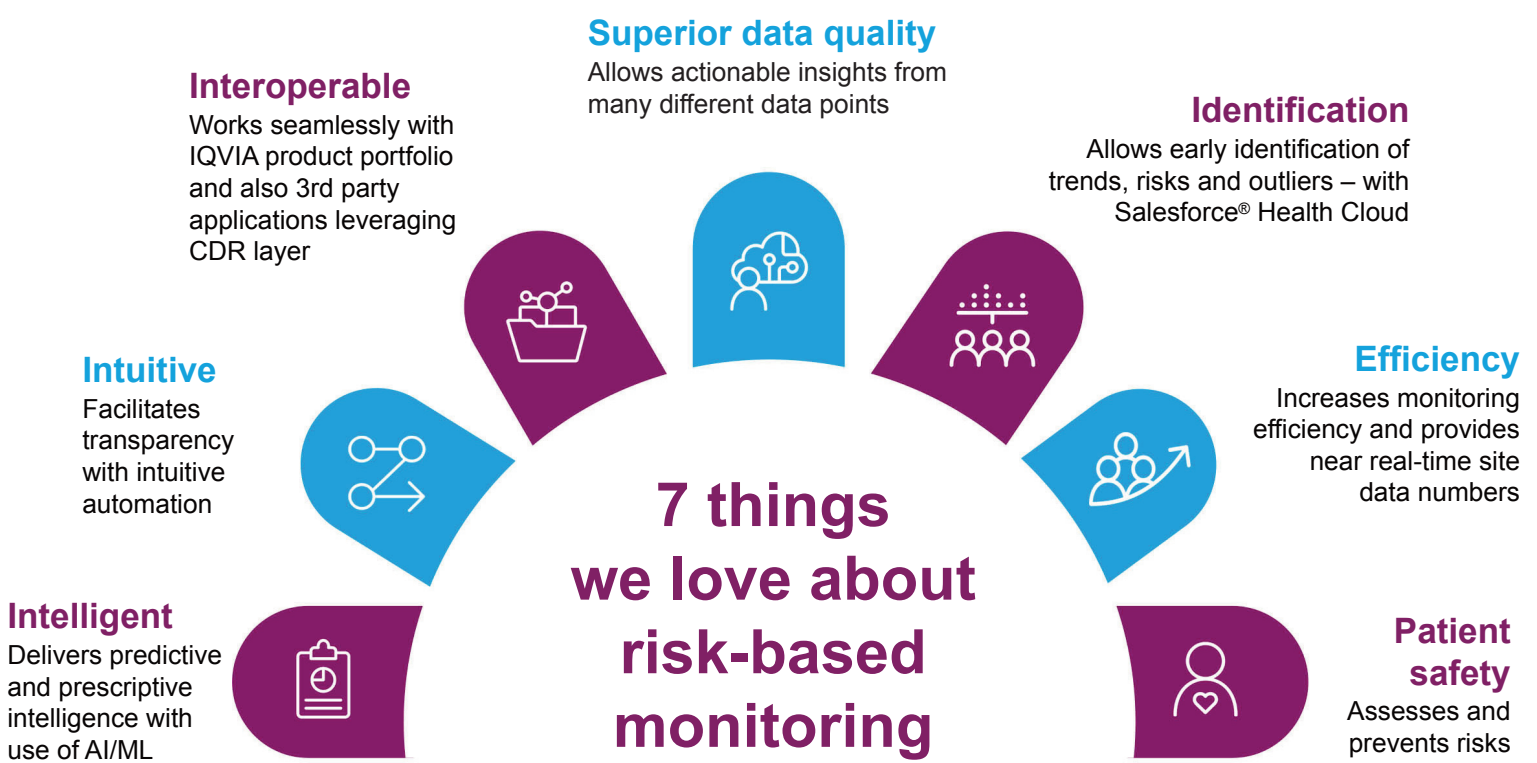


**Cost savings**  
Up to 25% cost savings when compared to traditional monitoring



**Improved patient safety**  
67% of queries resulted in data base updates, with 74% of these related to patient safety

References:  
1) Branch, E. (2016, April 30). Ways to Lower Costs of Clinical Trials and How CROs Help. Retrieved January 21, 2019, from <https://www.americanpharmaceuticalreview.com/Featured-Articles/185929-Ways-to-Lower-Costs-of-Clinical-Trials-and-How-CROs-Help/>



### Benefits



#### RBM reduces risk and cost

- **Intuitive workflow** for faster, more informed decisions
- **Intelligent AI/ML-enhanced application** for better data analysis
- **Interoperable with agile applications** that work well on their own but even better together



#### RBM improves study quality

- **Lowers error rate** with real-time data entry and site communication
- **Drives timely actions** with predictive and prescriptive analytics
- **Leverages current and historical data** and suggest “next best action”



#### RBM enhances patient safety

- **Predictive and advanced analytics** help resolve issues immediately at site and patient level
- **Focuses on higher risk sites** with timely communication and compliance
- **Allows patient-level data reviews** to identify trends and assure medical accuracy and congruence

### Features

- 1 Risk management** Automated risk identification and assessment: IQVIA Knowledge Base; automated mitigation plan; configurable KRIs, CDPs; KRI and CDP library
- 2 Study oversight** Advanced & predictive analytics on aggregated site & subject data at study level; perform study reviews and compare to historical outcomes
- 3 Site risk monitoring** Dashboard & drill downs for site status based on core KRIs and site data; automated & on-demand review generation; automated alerts and tasks based on user configuration
- 4 Subject data surveillance** Subject comparison across the study; early signal detection to flag outliers and inconsistencies; analytics & trend analysis for more precise subject reviews
- 5 Reports and insights** Operational reports; outcome reports

